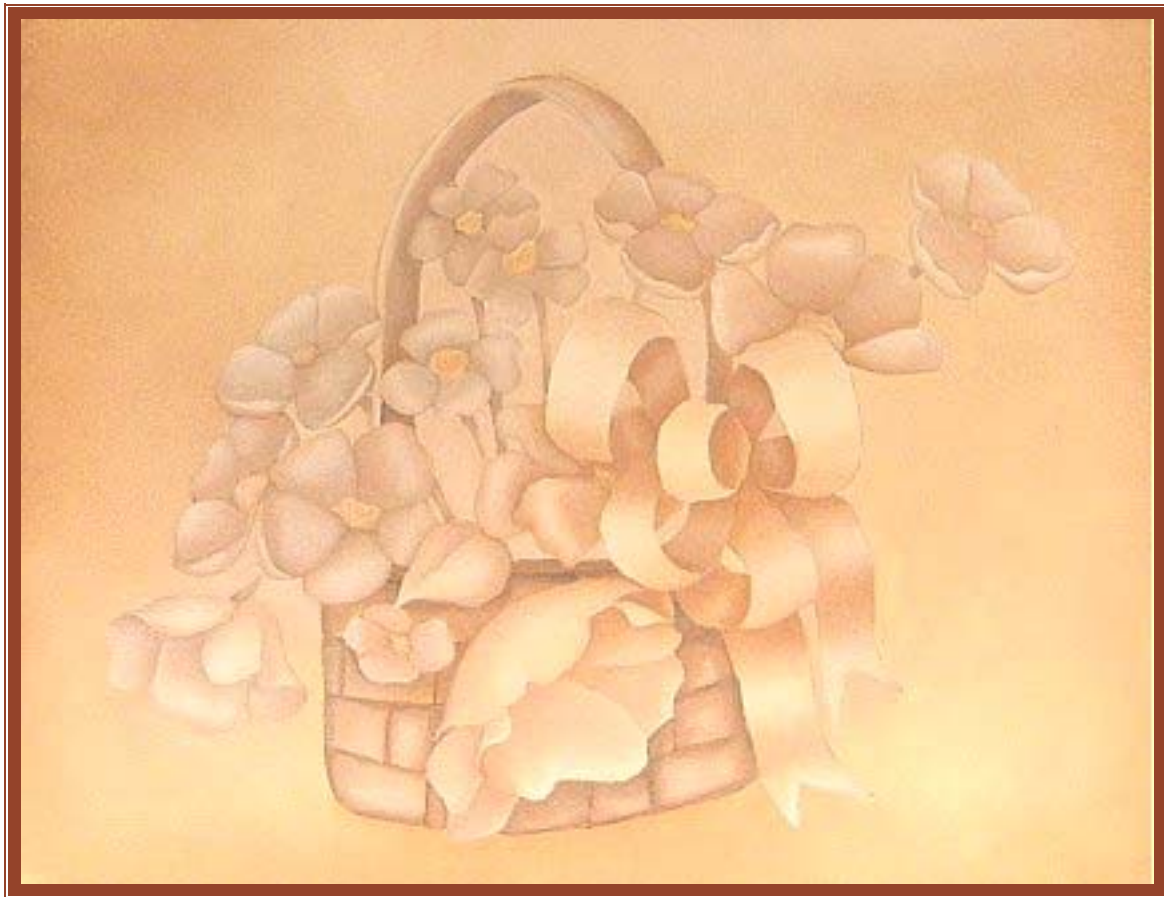


We R Art

19501 SE 125th St., McLoud, OK 74851
(405) 386-5703 www.we-r-art.com

Grisaille Flower Basket



Supply List

<p style="text-align: center;">Brushes</p> <p>Bette Byrd Series 200 Flat #'s - 12, 14, 16</p> <p style="text-align: center;">Series 600 Filbert #'s - 2, 4, 6, 8, 10</p> <p>Detail liner or spotter brush</p>	<p style="text-align: center;">For basecoating sample boards:</p> <p style="text-align: center;">Tilford Phylbert 1" Wash Or 4" Fabric Paint Roller</p> <p>Mop Brushes -- Loew-Cornell Maxine Thomas --- 3/4", 1/2" & 1/4"</p>	<p style="text-align: center;">Surface</p> <p>11" X 14" or larger Poster Board</p> <p style="text-align: center;">OR</p> <p>11" X 14" Bristol Board Prepped (Both Sides)</p>
<p>To prepare your sample boards:</p> <ol style="list-style-type: none"> 1. Mix a small amount of Multi-Purpose Sealer with the Light Buttermilk Acrylic paint. (1/3 : 1) 2. Apply to one side of board...dry with hair dryer. Apply to back side of board and dry. 3. Apply one layer of Grey Sky Acrylic paint (no sealer) to front side of board...dry with hair dryer. 4. Apply to back side of board and dry. 5. Repeat until surface is well covered. 6. Use your Heat Set Gun to cure the acrylic color completely. Do both sides of the boards for several minutes each side. Allow to cool and repeat. Allow your surface to cure overnight. 		
<p style="text-align: center;">Genesis Colors</p> <p>Burnt Sienna Burnt Umber Titanium White</p> <p style="text-align: center;">Genesis Mediums</p> <p>Genesis Glazing Gel Genesis Thinning Medium</p>	<p>DecoArt Americana Acrylic: Light Buttermilk</p> <p>Tracing Paper Lt. Gray Graphite Transfer Paper Blue Saral Transfer Paper #2 Lead Pencil Sharpie Extra Fine Black Marker</p>	<p style="text-align: center;">Miscellaneous Supplies</p> <p>Pocket Color Wheel Turpenoid or Turpenoid Natural Soft Paper Towels Metal Palette Knife--- P-12 DecoArt Multi-Purpose Sealer Non Porous Palette: --Glass or Wingate Palette Kneaded Eraser C-thru Ruler</p>

Color Mix Recipes

Value Name	Recipe	Color Sample
Highlight (HL)	Titanium White + Burnt Sienna (1 : tt)	
Light (L)	Titanium White + Burnt Sienna (1 : tt)	
Low Light (LL)	Titanium White + Burnt Sienna (1 : t)	
Medium (M)	Titanium White + Burnt Sienna (1 : ¼)	
High Dark (HD)	None	
Dark (D)	None	
Low Dark (LD)	None	
Darkest (Dst)	None	

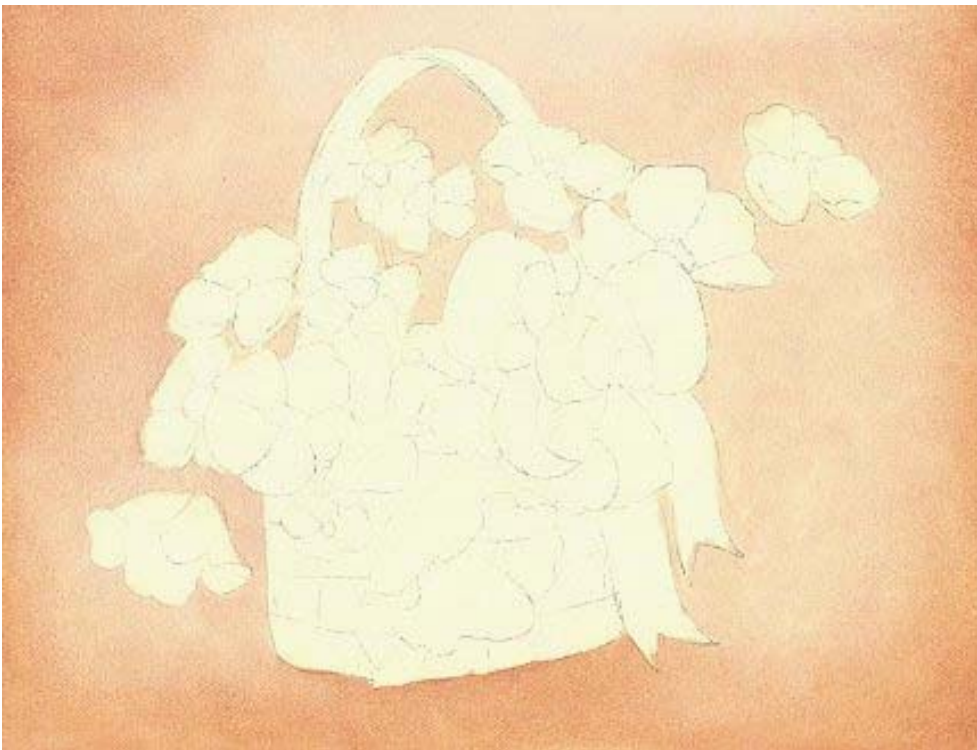
Trace and transfer the pattern to your board. Use your Kneaded eraser to lighten the lines as much as possible while still being able to see them.

Let's Paint

Apply the paint in a thin even layer that is thick enough to allow for easy blending but not so deep as to make a mess as you blend. You will know you need to add a little more paint if it's hard to blend the paint with your mop brush. If the mop brush is picking up lots of paint as you tap to blend then you may need to remove some of the excess paint before blending. Lay a single layer sheet of paper towel over the area and rub your fingers over the towel. Do not allow the towel to move...only your fingers should move. Lift the towel then try mop brush blending again.

Work one petal or segment at a time as you apply the values and then use a mop brush to soften and blend. Always tap gently with the "face" or side of the mop brush...never pounce with the chisel edge as this would lift too much paint and leave a rough texture. Be certain to wipe your mop brush dry quite often as you are tapping to blend an element of your design.

The Background



1. Using your "#12" Flat brush, apply your Medium Value Mix around the perimeter of the board. Apply this paint in fairly thin and stretch it out so that you run out paint in your brush before reloading.
2. Wipe your brush and pick up some of the Low Light Value Mix and apply this color to the remainder of the background, again in a fairly thin layer and stretching the paint before reloading. Slightly overlap where the Low Light meets the Medium Value color.
3. Use your 3/4" Mop Brush to tap into the background paint with the "face" of the brush.

Wipe your brush often as you soften out the brush marks caused by the flat brush.

4. Use your Genesis Heat Gun to dry the entire background paint. Be sure to allow the heat gun about 15 seconds to heat up before beginning to dry the surface. Hold the gun about 4 – 5" from the surface and begin to count.....1001, 1002, 1003, 1004, 1005, 1006, 1007, 1008, 1009, 1010, 1011, 1012. Move the gun over about 1 1/2" and begin to count again. Repeat as often as necessary to dry all of the wet paint.
5. Allow the surface to cool completely before moving on.



The Basket

1. Use a #2 or #4 brush or what ever size works for you. Apply the Darkest Mix Colors to outline the segments of the baskets. Wipe your brush and stretch this color toward the center of each segment.
2. Apply a small amount of Light Mix Color to the center of each segment and then pat blend so that the two values slightly blend together.
3. Use your small mop brush to soften any brush marks.
4. Apply a very small amount of the Highlight Value Mix to the center of the basket segments and then use your clean Mop brush to soften this color into the previous paint.
5. Note where there would be cast shadows and apply a small amount of your darkest Value to indicate these cast shadows. Softly blend with the mop brush.

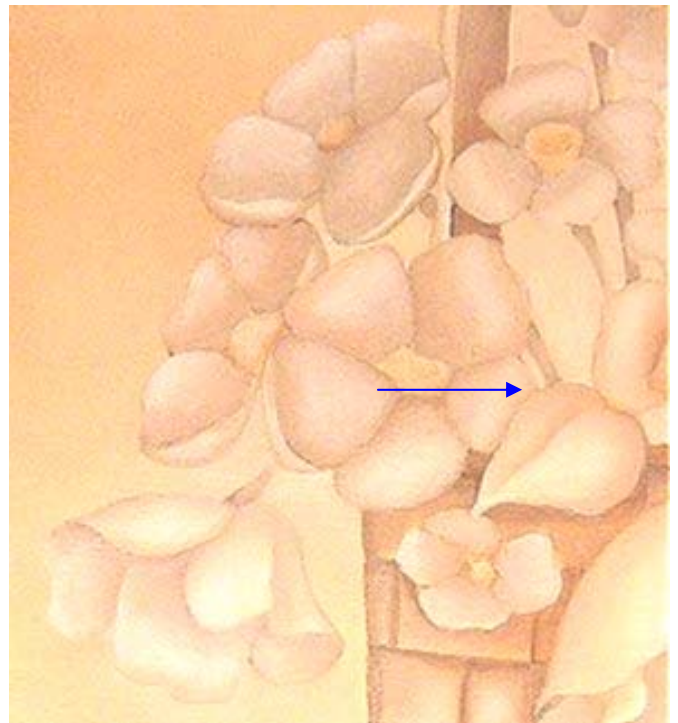
The Flowers

1. Using a small filbert brush and the top

three or four Values in your color mixes... you will want to use colors that help to form and shape each petal. For this painting we will need to keep our colors lighter and duller on the flowers that are in the area outside our focal area. This will mean only using the top three lightest values in our mixes using the Low Light value as our darkest area and the two lightest values for the rest of the petal. *LEFT SIDE*

FLOWERS

2. In the focal area you will want to use the Medium Value mix for the darkest area and the two lightest values for the rest of the petal. (See value chart) Note that the three circles on the Value Chart indicate the Focal Area (center) and the outer planes of the painting. Your values will need to get lighter (duller) and have less contrast as you work your way farther from the center circle.



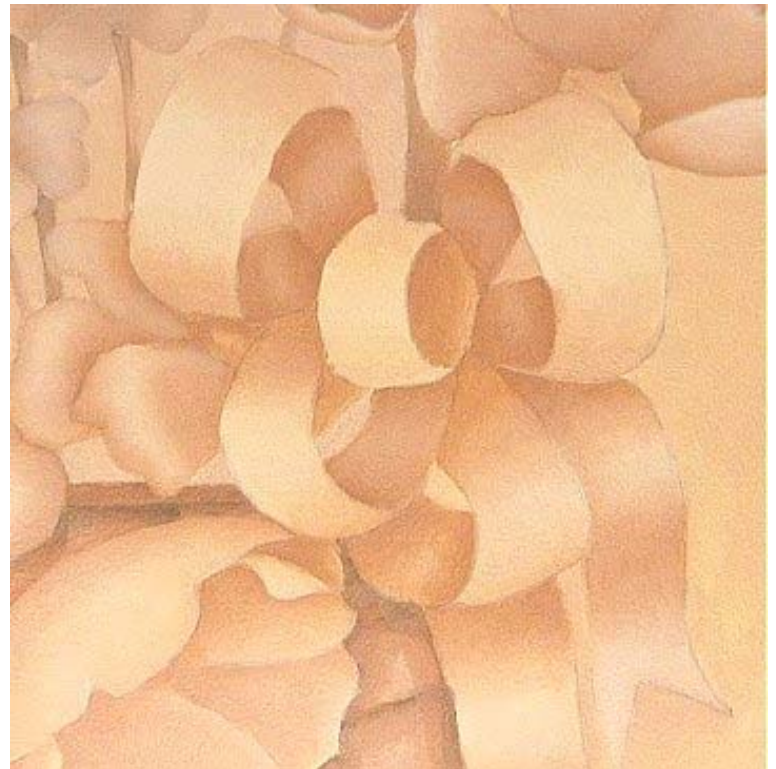
RIGHT SIDE FLOWERS



3. When working on the Poppy in front of the basket... keep in mind that part of the flower is in the center focal area and part is in the outer rings. This means that you need to use the medium value in the darkest area that is in the focal area but shift up a value lighter in the other areas.
4. Keep the values more subtle in the area where the flower is farthest from the focal area. Choose a larger brush when working in the larger areas of this flower and smaller brushes when working in smaller areas. Be sure to use your mop brush to soften the blends and leave no harsh brush strokes.

The Bow

1. Be certain to use the Medium Value for your darkest areas on the bow. Use the two lightest Values for your middle and light areas of the bow.
2. Note on the color picture where to place your values to give the bow its form and shape.





This Lesson and all photos are protected by National Copyright Law.

You may use this lesson for your personal art education and enjoyment. You may print out this lesson for your own use only. Please do not make copies for your friends.

You may paint and sell your version of the designs on any surface (up to 50 individual pieces only) for pin money. No mass production is allowed in any form. You may show a picture of your painted version of this design on the internet as long as you give credit to the original designer. Please include the designer's name and website address.

If you are a teacher, please contact us for special discounts for packet quantity purchases. You **must request written permission** from Brenda to copy the line drawing pattern only for teaching purposes. Instructions, worksheets and photos may **not** be copied or rewritten for distribution of any kind.

Misc. Notes:

Thank you for purchasing this lesson. Your purchase includes individual assistance from the designer. Please contact Brenda by email at bsrickman@mcloudteleco.com . Brenda does become quite busy at times so please be patient and be assured that you will be contacted with a reply to your painting question as soon as possible.

You can also chat live with Brenda in her ChatRoom Class every Tuesday evening. There is no charge for attending our chatroom classes at 8:00 pm EST every Tuesday evening. Access the chatroom through our menu bar on our website at www.we-r-art.com Look in the menu bar under Learn With Us then Chatroom.